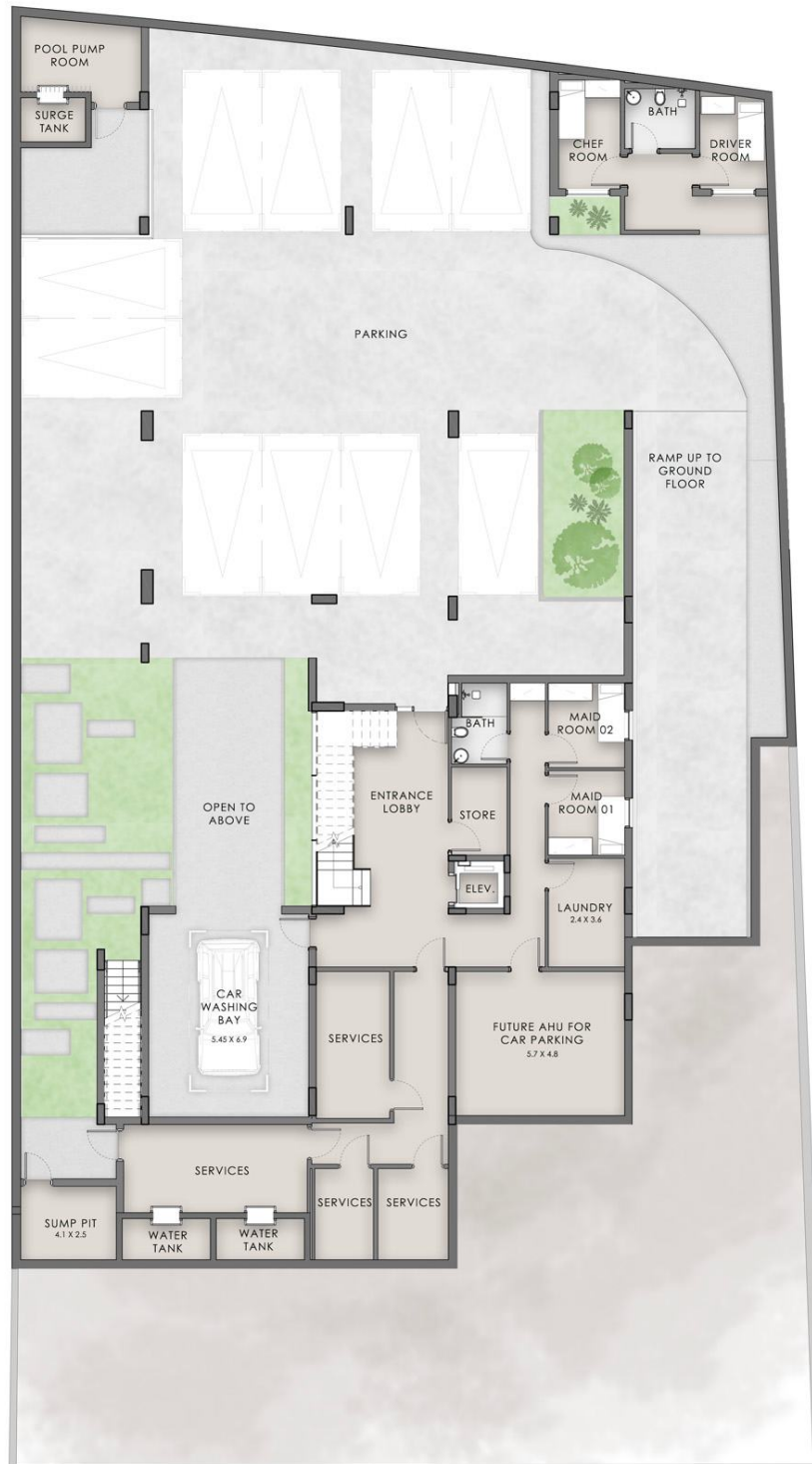


# Villa Type One - Plot 5

Number of bedrooms : 7 bedrooms

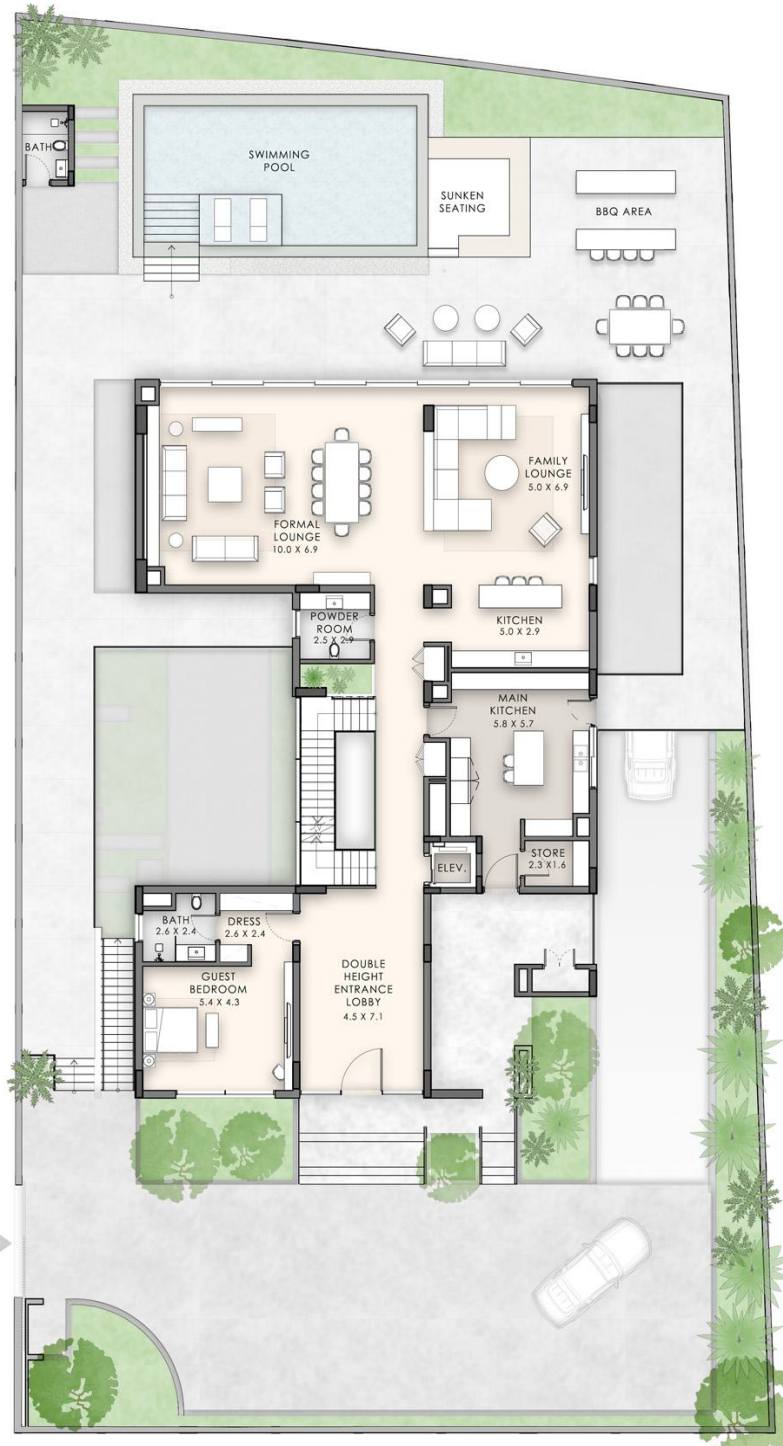
Plot Area : 1,283 SQ.M | 13,807 SQ.FT • BUA : 2,068 SQ.M | 22,262 SQ.FT



Basement Area : 886 SQ.M | 9,538 SQ.FT

**Disclaimer:**

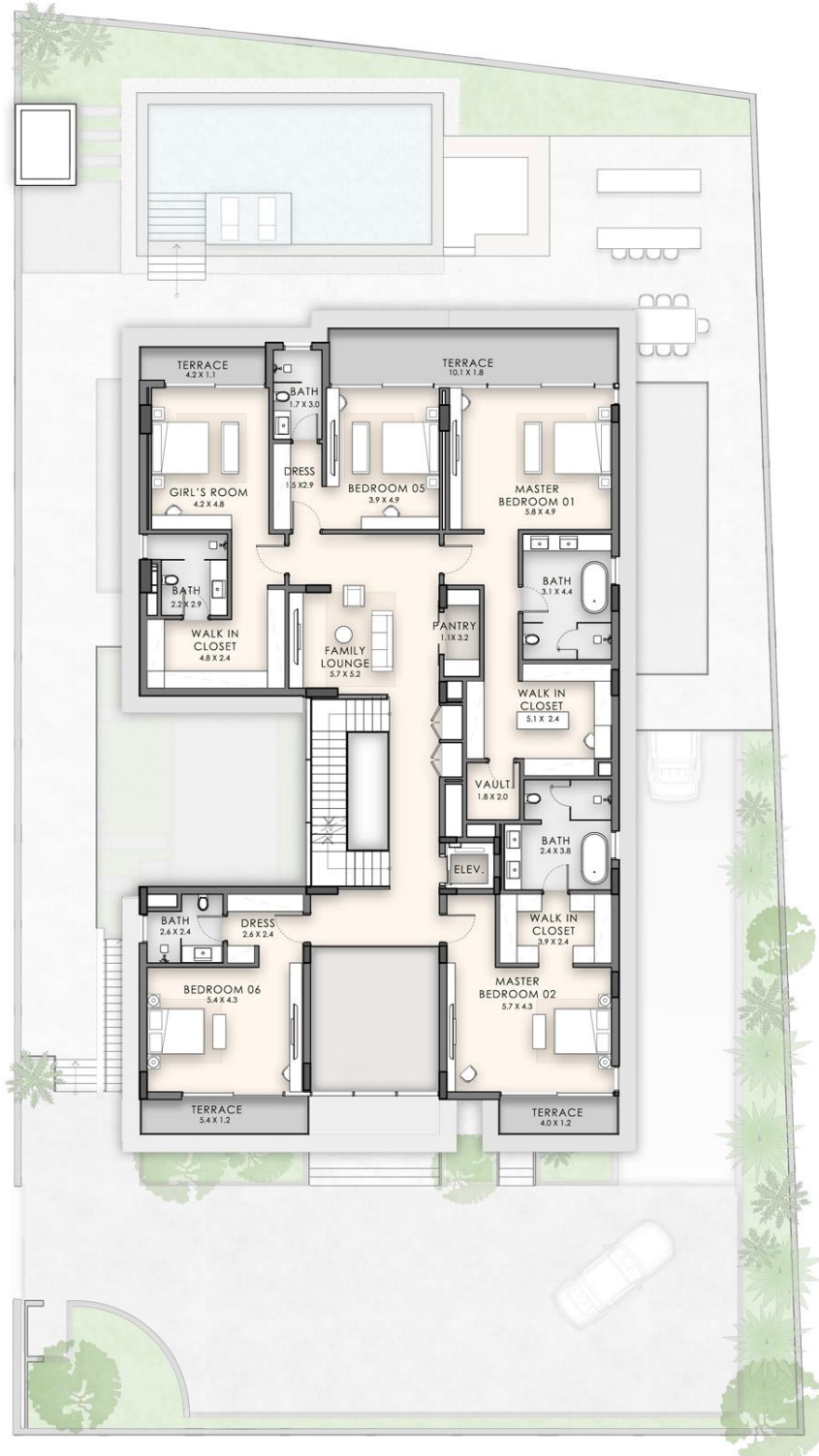
(1) All materials, dimensions, renders and drawings are approximate and for illustration purposes only. (2) Information is subject to change without notice. (3) Actual areas may vary from the stated area. (4) Drawings not to scale. (5) The developer reserves the right to make revisions/alterations without any liability whatsoever. (6) Units are sold as unfurnished, without furniture, fittings, etc.



Ground Area : 352 SQ.M | 3,794 SQ.FT

**Disclaimer:**

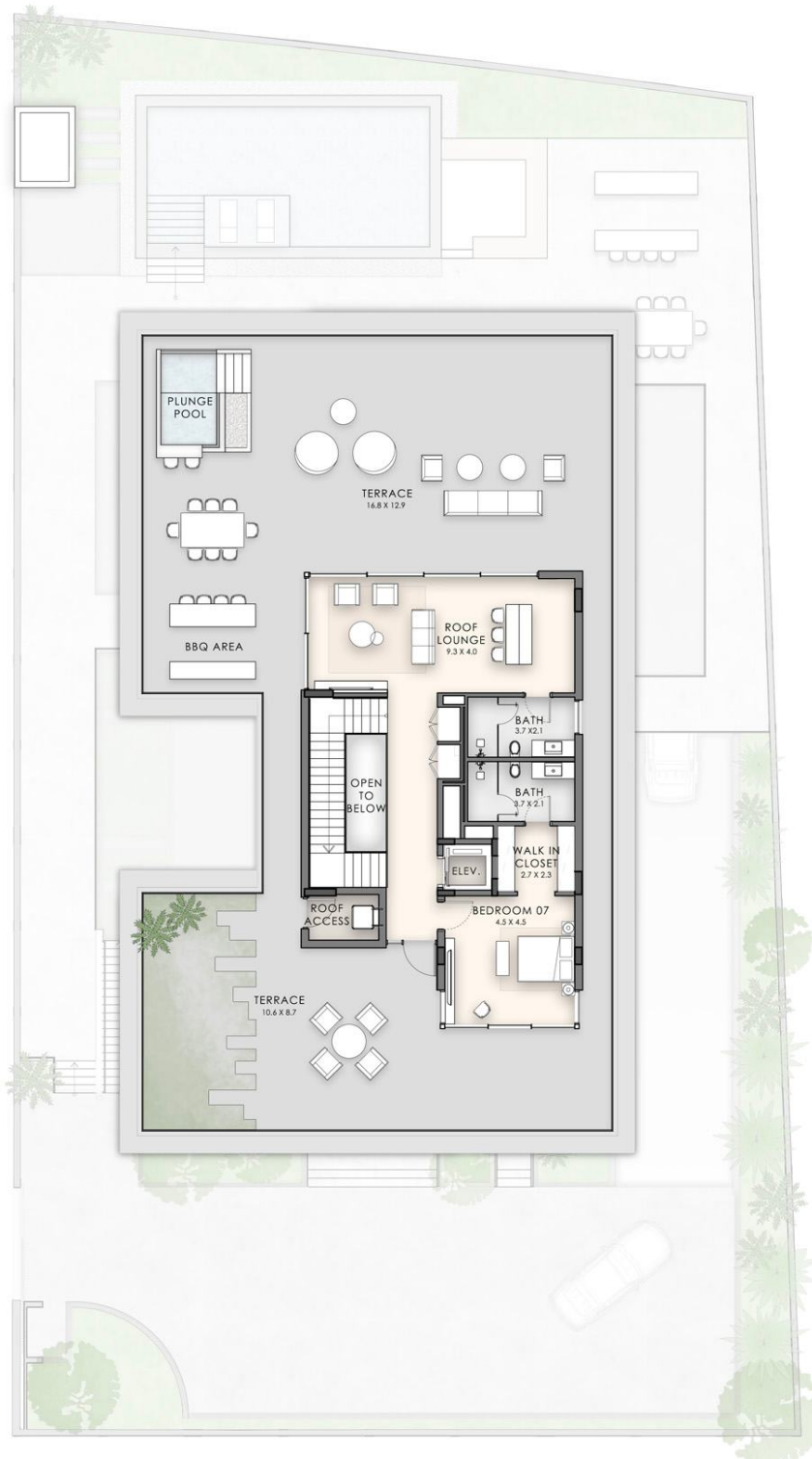
(1) All materials, dimensions, renders and drawings are approximate and for illustration purposes only. (2) Information is subject to change without notice. (3) Actual areas may vary from the stated area. (4) Drawings not to scale. (5) The developer reserves the right to make revisions/alterations without any liability whatsoever. (6) Units are sold as unfurnished, without furniture, fittings, etc.



First Area : 393 SQ.M | 4,230 SQ.FT

**Disclaimer:**

(1) All materials, dimensions, renders and drawings are approximate and for illustration purposes only. (2) Information is subject to change without notice. (3) Actual areas may vary from the stated area. (4) Drawings not to scale. (5) The developer reserves the right to make revisions/alterations without any liability whatsoever. (6) Units are sold as unfurnished, without furniture, fittings, etc.



Second Area : 437 SQ.M | 4,700 SQ.FT

**Disclaimer:**

(1) All materials, dimensions, renders and drawings are approximate and for illustration purposes only. (2) Information is subject to change without notice. (3) Actual areas may vary from the stated area. (4) Drawings not to scale. (5) The developer reserves the right to make revisions/alterations without any liability whatsoever. (6) Units are sold as unfurnished, without furniture, fittings, etc.